



VScom 200Ei-SI PCIex

2 RS232, RS422/485 ports PCI Express Card with optical isolation & surge protection.



KEY FEATURES

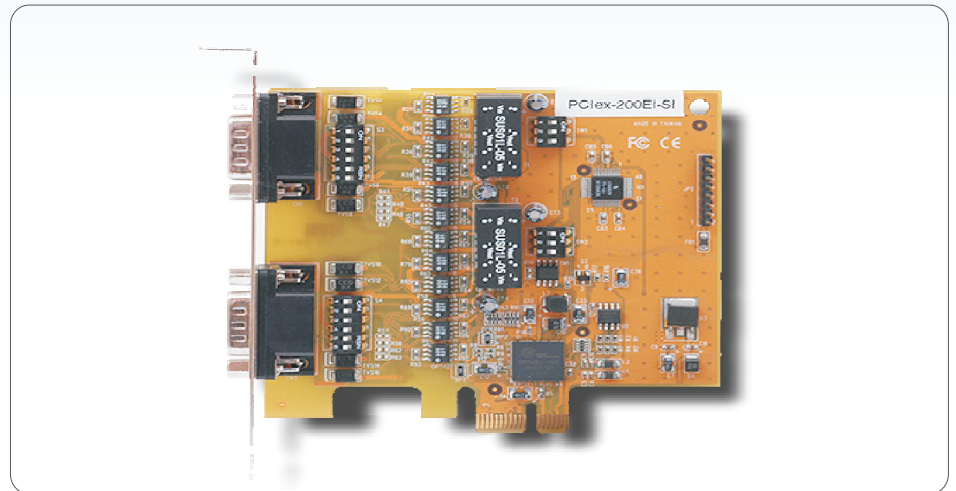
- PCI Express x 1
- 2 x RS232, RS422/485
- RS485 ART (Automatic Receive Transmit control)
- RS485 in 3 operation modes
- Optical isolation, surge protection (also in RS232)
- Compact board size (half-size)
- Built-in termination resistors
- Drivers for Windows 2000, XP, 2003 and Vista

Overview

The VScom 200Ei-SI PCIex is designed for RS232, RS422/485 industrial communication. It supports 2 independent RS232, RS422 or RS485 ports. Each port can be configured separate.

In RS485 modes applications enable transmission by simply sending data. This is done by ART (Automatic Receive Transmit control) intelligence. The Transmitter is disabled exactly with the end of the last character sent. No modification is necessary in programs.

In addition, hardware flow control and built-in termination resistors guarantee data integrity. Optical isolation and surge protection are also available for RS232 Signals to deliver high reliability. All of these features make VScom 200Ei-SI PCIex suitable for harsh industrial applications. Optical isolated RS232 presents 200Ei-SI as a choice for medical environment.



Specifications

| | |
|-------------------------------|---|
| Hardware | |
| I/O controller | 2 x 16C950C, each with 128 bytes Tx/Rx FIFO |
| Connector type | Male DB9 |
| Interface | |
| Bus interface | PCI Express x 1 |
| Serial interface | RS232, RS422 / 485 |
| No. of ports | 2 |
| Signals | RS232 Tx/D, Rx/D, CTS, RTS, DTR, DSR, DCD, GND RS422 Tx+/-, Rx+/-, RTS+/-, CTS+/-, GND RS485 Data+/-, GND |
| RS485 data control | ART (Automatic Receive Transmit control) |
| Built-in termination resistor | RS422: 120 Ohm RS485: 120 Ohm, DIP enable / disable |
| Performance | |
| Speed | RS232: up to 921.6Kbps; RS422/485: up to 3.6Mbps |
| Max. no. of ports | Unlimited |
| Configuration | |
| Parity | None, even, odd, space, mark |
| Data bits | 5, 6, 7, 8 |
| Stop bits | 1, 1.5, 2 |
| IRQ | Assigned by System |
| I/O address | Assigned by System |

Specifications

| Available modes | |
|-----------------------------|--------------------------------------|
| RS232 | Full duplex |
| RS422 | Full duplex |
| RS485 | 4 wire , full duplex |
| RS485 | 2 wire, half duplex, with echo |
| RS485 | 2 wire, half duplex, without echo |
| Power and Environment | |
| Power requirement | 430mA max.(+5V) |
| Operation temp. | 0°C - 55°C |
| Dimension | 80mm x 59mm |
| Operating Systems supported | |
| WIN 2000, XP, Vista | VScom high performance serial driver |

Ordering Information

| | |
|--------------|---|
| Art. No | 4506 |
| Product Name | VScom 200Ei-SI PCIe |
| Packing List | VScom 200Ei-SI PCIe card, CD, English Documentation |

VScom is offering a full range of serial communication solution for industrial application fields. Currently VScom designs and manufactures technologically advanced and cost effective Ethernet to Serial, RISC-Embedded Systems, CAN Bus to Serial, USB to Serial and PCI to Serial solutions. Envisioning the rapid growth in using Ethernet in different industrial fields. VScom is presently focusing on integration of LAN and Wireless LAN technology in serial connectivity products. VScom brand products have been in the market since 1995 and are known as high quality, reliable and long life devices. More information on the products is available at www.vscom.de